

VISION VX SERIES

- Type 2 photoelectric safety barrier with integrated control function
- Slimline housing
- 7 segment display for signalling and functional diagnosis
- Alignment status and diagnostic indication on barrier
- Eight resolutions, 3 hand and 5 body

TECHNICAL FEATURES AND MODELS

20MM RESOLUTION



Item No.		VX-152	VX-302	VX-452	VX-602	VX-752	VX-902	VX-1052	VX-1202	VX-1352	VX-1502	VX-1652	VX-1802
Protected height (B)	mm	160	310	460	610	760	910	1060	1210	1360	1510	1660	1810
Response time	ms	7	8.5	10.5	12.5	14.5	16.5	18	20	22	24	26	28
Number of beams		15	30	45	60	75	90	105	120	135	150	165	180
Total barrier height	mm	261	411	561	711	861	1011	1161	1311	1461	1611	1761	1911

30MM RESOLUTION



Item No.		VX-153	VX-303	VX-453	VX-603	VX-753	VX-903	VX-1053	VX-1203	VX-1353	VX-1503	VX-1653	VX-1803
Protected height (B)	mm	160	310	460	610	760	910	1060	1210	1360	1510	1660	1810
Response time	ms	6	7	8	9	10	11	12	13	14	15	16	17
Number of beams		8	16	24	32	40	48	56	64	72	80	88	96
Total barrier height	mm	261	411	561	711	861	1011	1161	1311	1461	1611	1761	1911

40MM RESOLUTION



Item No.		VX-304	VX-454	VX-604	VX-754	VX-904	VX-1054	VX-1204	VX-1354	VX-1504	VX-1654	VX-1804	
Protected height (B)	mm		310	460	610	760	910	1060	1210	1360	1510	1660	1810
Response time	ms		6	7	7.5	8	8.5	9.5	10	10.5	11	12	12.5
Number of beams			10	15	20	25	30	35	40	45	50	55	60
Total barrier height	mm		411	561	711	861	1011	1161	1311	1461	1611	1761	1911

50MM RESOLUTION



Item No.		VX-305	VX-455	VX-605	VX-755	VX-905	VX-1055	VX-1205	VX-1355	VX-1505	VX-1655	VX-1805	
Protected height (B)	mm		310	460	610	760	910	1060	1210	1360	1510	1660	1810
Response time	ms		6	6.5	7	7.5	8	8.5	9	9.5	10	10.5	11
Number of beams			8	12	16	20	24	28	32	36	40	44	48
Total barrier height	mm		411	561	711	861	1011	1161	1311	1461	1611	1761	1911

90MM RESOLUTION



Item No.		VX-309	VX-459	VX-609	VX-759	VX-909	VX-1059	VX-1209	VX-1359	VX-1509	VX-1659	VX-1809	
Protected height (B)	mm		310	460	610	760	910	1060	1210	1360	1510	1660	1810
Response time	ms		5.5	6	6	6	6.5	7	7	7.5	8	8	
Number of beams			5	7	9	11	13	15	17	19	21	23	25
Total barrier height	mm		411	561	711	861	1011	1161	1311	1461	1611	1761	1911

2 BEAM



Item No.		VX-2B
Protected height (B)	mm	610
Response time	ms	6
Number of beams		2
Total barrier height	mm	701

3 BEAM



Item No.		VX-3B
Protected height (B)	mm	910
Response time	ms	6
Number of beams		3
Total barrier height	mm	1001

4 BEAM



Item No.		VX-4B
Protected height (B)	mm	1010
Response time	ms	6
Number of beams		4
Total barrier height	mm	1101

CONNECTORS

Part No.	Description
805000E03M050	M12, 5 pole, straight connector lead, 5m cable
805000E03M100	M12, 5 pole, straight connector lead, 10m cable
8A5000315	M12, 5 pole, straight wireable connector, PG7 gland
8A5000325	M12, 5 pole, straight wireable connector, PG9 gland
808000P02M050	M12, 8 pole, straight connector lead, 5m cable
808000P02M100	M12, 8 pole, straight connector lead, 10m cable
808000P02M150	M12, 8 pole, straight connector lead, 15m cable

ANTI VIBRATION KITS

Part No.	Description
SAV3	4 anti vibration supports
SAV4	6 anti vibration supports

SILGE ELECTRONICA S.A.

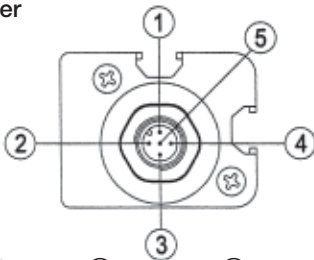
Av. Mitre 950 1602 (011)4730-1001
 Florida Buena Aires info@silge.com.ar
 Argentina www.silge.com.ar

GENERAL TECHNICAL SPECIFICATION

Safety type	2
Power supply	24 Vdc +/- 20%
Power consumption	5 Watts
Scanning range	0-18 metres max (selectable)
Response time	5.5 to 28 ms depending on model
Signalling	LED's for barrier status, diagnostics and alignment
Working temperature	0 - 50 °C
Degree of protection	IP65
Fixing modes	Back slot, side slot or top and bottom brackets
Cross sectional dimensions	Main Body 45mm x 35mm
Connections	5 pole, M12 (Tx) 8 pole, M12 (Rx)

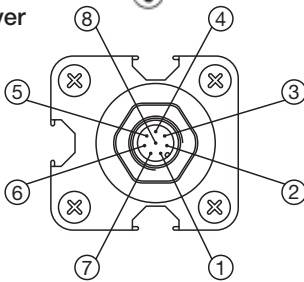
ELECTRICAL CONNECTIONS

Emitter



Pin No.	Description	Function
1	24 Vdc	Power supply (positive)
2	Self range/test 1	Input 1 for range selection/test
3	0 Vdc	Power supply (negative)
4	Self range/test 2	Input 2 for range selection/test
5	PE	Earth connection

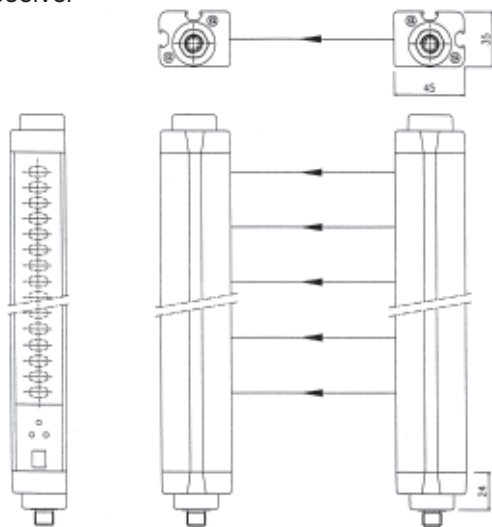
Receiver



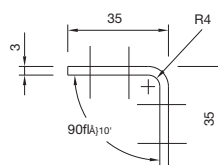
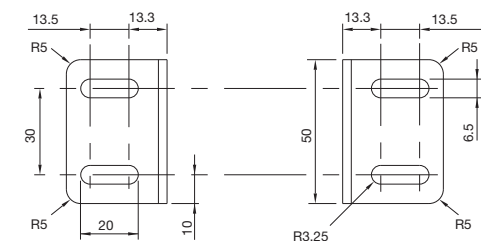
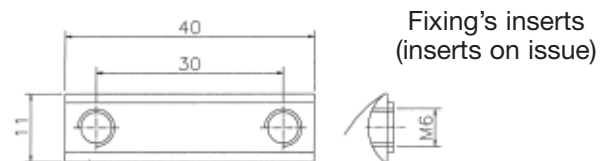
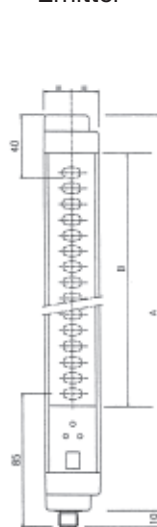
Pin No.	Description	Function
1	OSSD1	Static output 1 (PNP active high)
2	24 Vdc	Power supply (positive)
3	OSSD2	Static output 2 (PNP active high)
4	EXT K1 K2	Feedback external contactors
5	EXT SEL A	Barrier configuration
6	EXT SEL B	Barrier configuration
7	0 Vdc	Power supply (negative)
8	PE	Earth connection

DIMENSIONS & MOUNTING

Receiver



Emitter



Fixing's brackets type LS (brackets on issue)

Model	mm	VX-15*	VX-30*	VX-45*	VX-60*	VX-75*	VX-90*	VX-105*	VX-120*	VX-135*	VX-150*	VX-165*	VX-180*
Transmitter height (A)	mm	251	401	551	701	851	1001	1151	1301	1451	1601	1751	1901
Receiver height (A)	mm	251	401	551	701	851	1001	1151	1301	1451	1601	1751	1901
Protected height (B)	mm	160	310	460	610	760	910	1060	1210	1360	1510	1660	1810
First active beam	mm	85	85	85	85	85	85	85	85	85	85	85	85
Mounting		2 LS brackets and inserts						3 LS brackets and inserts					