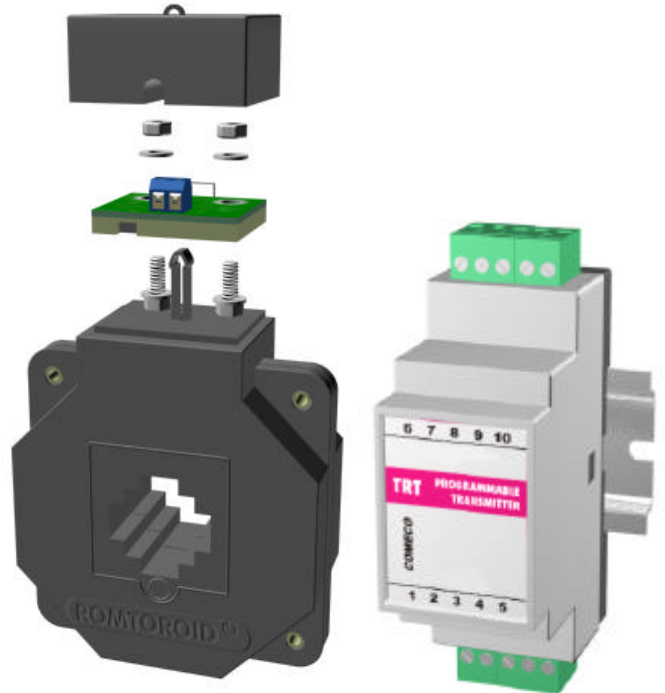


## AC/DC Current Transmitters TRT

TR

- ♦ Low cost
- ♦ 100% 2-wire AC/DC transmission
- ♦ Designed for mounting inside current transformers
- ♦ Reliable and accurate conversion
- ♦ High EMS suppression
- ♦ "Zero" and "Span" adjustment capabilities
- ♦ Various mounting options

The current-to-current transmitters of the TRT series by COMECO are designed to convert alternative current signal coming from current transformers into a standard 2-wire current signal, which is more suitable for transmitting. Together with a current transformer the TRT unit forms a AC/DC current converter suitable to measure big AC currents up to more than 1000 A. The 4 to 20 mA output can be used for measuring, regulation and registration in special control systems. The TRT transmitter is based on modern integrated circuits and it is a **fixed range transmitter**. TRT input ranges cover most popular current transformers output signals (0 to 1A or 0 to 5A) and customer specified inputs as well. TRT transmitters are available in **various mounting options**: inside current transformer series TFC, in IP65 box or on rail. The TRT model is an easy-to-use, **low-cost** and EMS protected devices. The TRT application area includes power stations, electrical equipment, electricity production and distribution. They also can be used as sensor transducers in various industrial control systems and everywhere, when AC to DC current conversion is desirable.



### Technical specifications

#### Input

<b>Input signal</b>	Alternative current
<b>Frequency</b>	50/60 Hz
<b>Input ranges</b>	0...1A or 0...5A
<b>Other input ranges</b>	0...max. 10A

#### Output

<b>Output signal</b>	2-wire, 4 to 20 mA
<b>Current limitation</b>	Low=3 mA, High=28 mA
<b>ZERO and SPAN adjustment</b>	± 10 % by trimpots
<b>Maximal line load</b>	800Ω @ 24V/20mA

#### Accuracy

<b>Measurement error</b>	0.5 % from span
<b>Non-linearity</b>	0.2 % from span
<b>Temperature drift</b>	0.02 % of span for 1 °C

#### Power supply

<b>Voltage</b>	8 to 32 VDC
<b>Admissible variations</b>	10% p-p @ 50Hz

#### Operating conditions

<b>Operating temperature</b>	-20 to 75 °C
<b>Operating humidity:</b>	
- mounted in TFC transformers	0 to 80 %RH, no condensing
- mounted on a rail	0 to 90 %RH, no condensing
- mounted in a box	0 to 95 %RH

#### Design and materials

<b>Case material</b>	Plastic		
<b>Wiring</b>	Screw terminals		
<b>Mounting</b>	In TFC <sup>(1)</sup>	On rail	In box
<b>Dimensions [mm]</b>	43x33x16	106x35x57	80x80x60
<b>Weight</b>	20 g	90 g	150 g
<b>Protection: case/terminals</b>	IP 40/20	IP 20/20	IP 65

<sup>(1)</sup> Relate only to the electronic unit

### Ordering code



TRT - G6.G12

Code	Feature or option	Code values
<b>G6</b>	Input signal	<b>Z1</b> - 0...1Aac, <b>Z5</b> - 0...5Aac, <b>ZZ</b> - other range <sup>(2)</sup>
<b>G12</b>	Mounting	<b>B</b> - for mounting inside current transformer type TFC, <b>C</b> - for mounting on a rail, <b>D</b> - for mounting in a box IP-65

<sup>(2)</sup> Specify upper current limit within the range given in the "Input" table section above