

### WIRING

- |     |                                 |
|-----|---------------------------------|
| 1 - | Common power supply             |
| 2 - | Power supply 110 Va.c. 50/60 Hz |
| 3 - | NC contact 5A/250 Va.c.         |
| 4 - | Common contacts                 |
| 5 - | NO contact 5A/250 Va.c.         |

Electric motor draw 4 W

Ambient temperature range -20 to +70°C

Weight : 1,200 Kg

On request power supply at 24 - 220 Va.c. 50/60Hz - And also at 24 Vd.c.

IP65 Protection

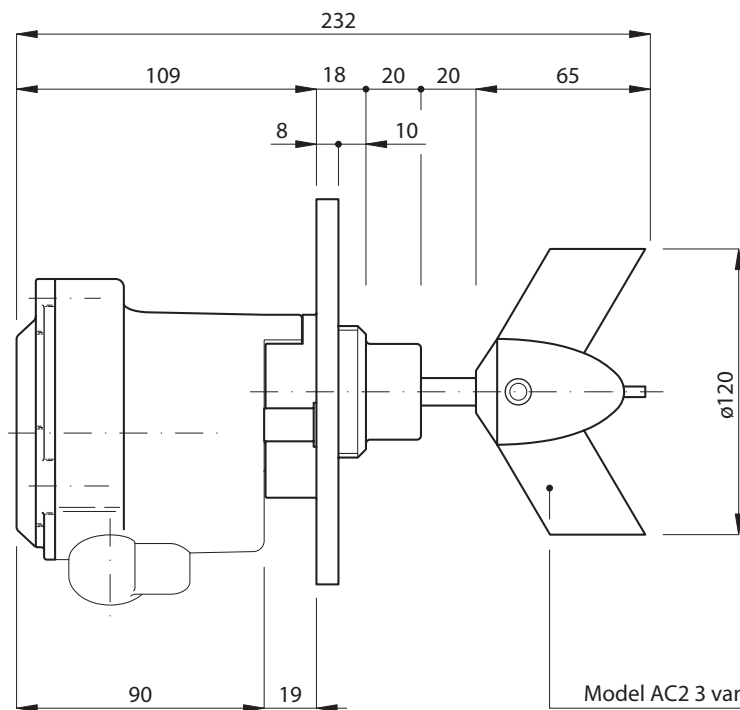
Maximum operational pressure 3 bar

SMALL-SIZED BLADED LEVEL GAUGE PARTICULARLY SUITABLE FOR USE ON SMALL TANKS OR BATCHING CELLS.

STANDARD ASSEMBLY WITH  $1\frac{1}{2}$  GAS THREADED NUT

Certificate number TÜV 03 ATEX 2374 X





Die-casting aluminium flange.

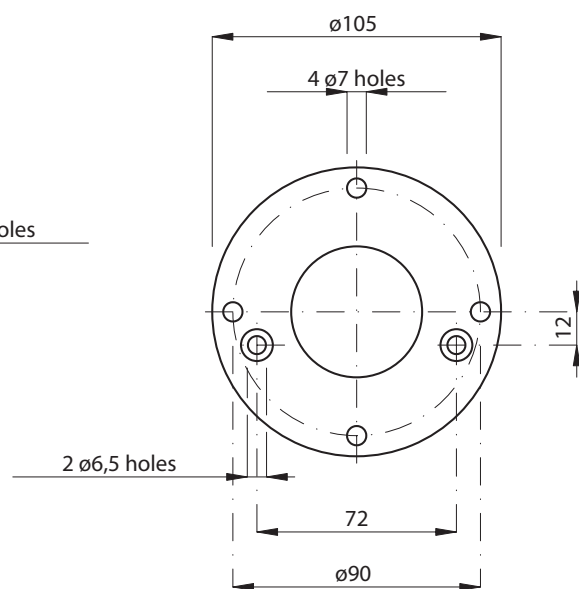
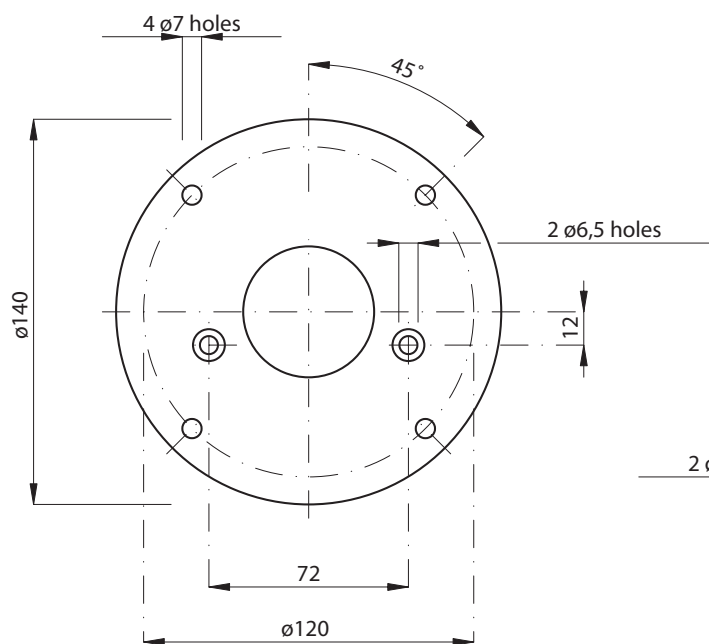
Make in two versions:  
ø140 and ø105mm.

Maximum dimension hole  
on counterflange:  
for flange ø140 = ø105  
for flange ø105 = ø 75

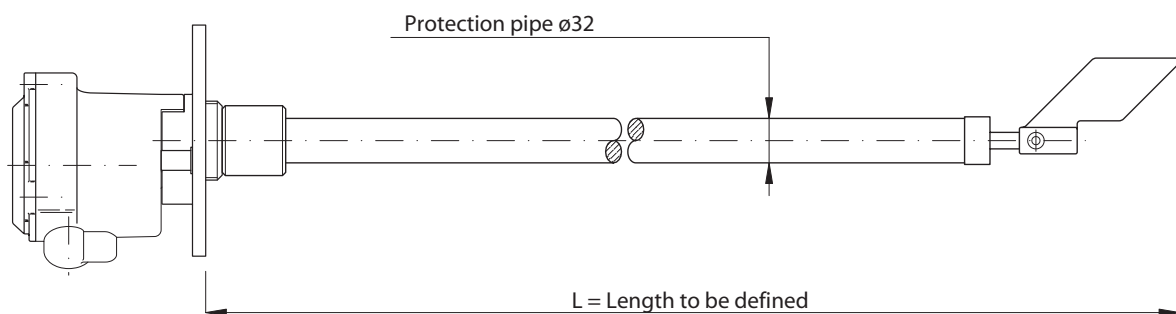
Existing space between  
flange and level gauge  
casing allows the M6x12  
bolts assemblage.

Flange can be installed  
at a later date.

The flange is fixed on  
level gauge casing by  
two M6 screws.



Level gauge can be delivered with extension, with or without protection, the length is defined by the buyer during the order.



The extension can be installed at a later date