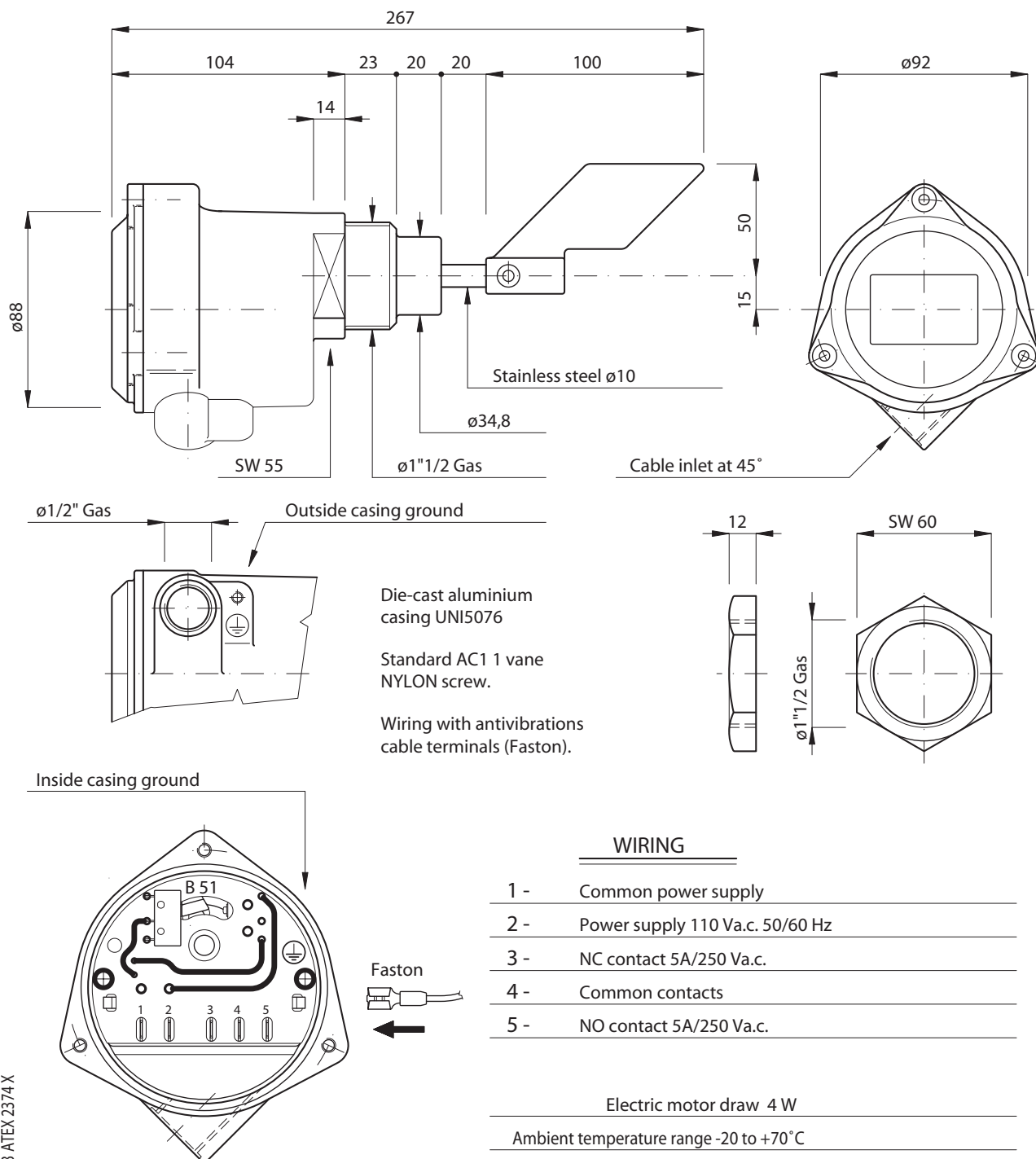


LEVEL GAUGES

vast range, long-lasting



Certificate number TÜV 03 ATEX 2374 X

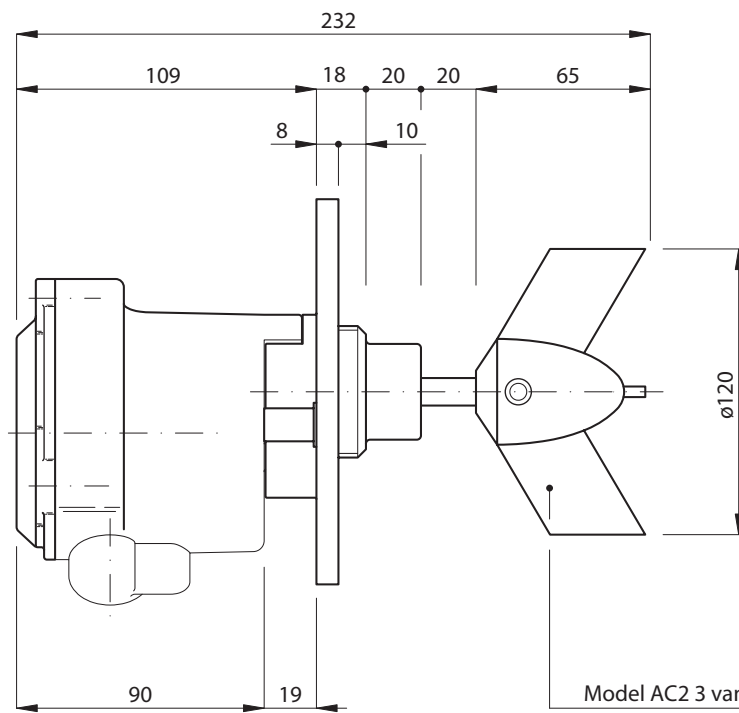


STANDARD ASSEMBLY WITH 1"1/2 GAS THREADED NUT

BLADED LEVEL GAUGE PFG-57

D3623

Rev. 01



Die-casting aluminium flange.

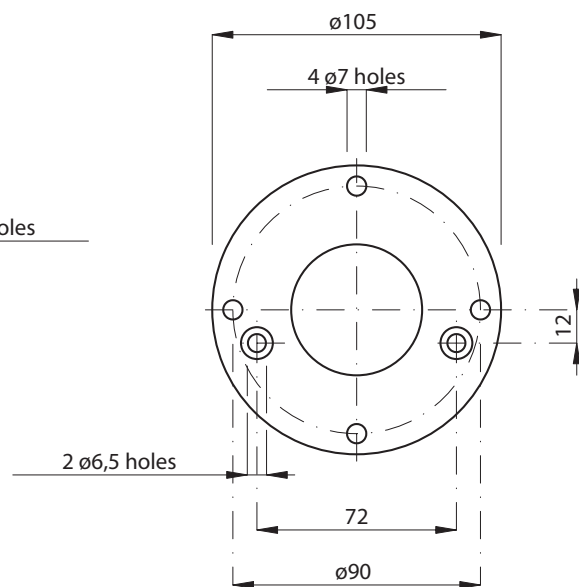
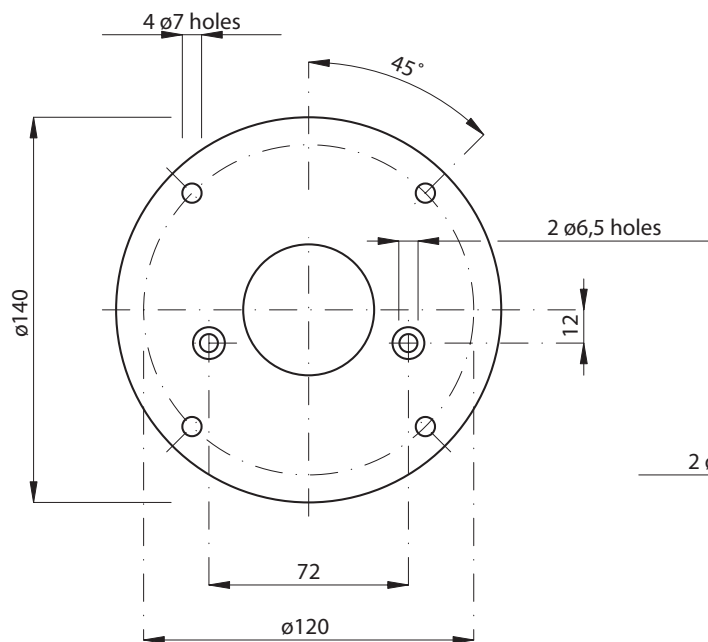
Make in two versions:
 $\varnothing 140$ and $\varnothing 105$ mm.

Maximum dimension hole
 on counterflange:
 for flange $\varnothing 140 = \varnothing 105$
 for flange $\varnothing 105 = \varnothing 75$

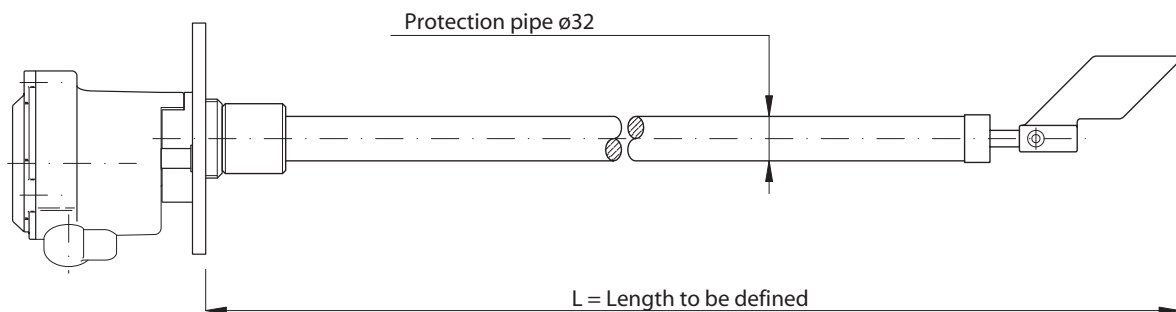
Existing space between
 flange and level gauge
 casing allows the M6x12
 bolts assemblage.

Flange can be installed
 at a later date.

The flange is fixed on
 level gauge casing by
 two M6 screws.



Level gauge can be delivered with extension, with or without protection, the length
 is defined by the buyer during the order.



The extension can be installed at a later date