



Compact and robust thermoplastic enclosure (PBT).  
22 mm fixing.

Coded magnetic operation – Tamper resistant.

Can be connected to Mosaic safety configurable controller (PL e) or to the dedicated safety control unit MG d1 (PL d).

MG S switches connected to Mosaic safety controller form a certified PL e safety system.

Switching distance: 3 - 10 mm.

Sensor with 4 wires: 2 NO contacts.



Operating temperature: -25 ... +75 °C



IP67 rating

## MG S

### RECTANGULAR COMPACT HOUSING

#### TECHNICAL FEATURES

Operating voltage (VDC)	24
Switching current (mA)	Max. 100
Series resistance (Ohm)	22
Switching power (W)	3
Shock resistance (Hz/g)	10 - 2000/35
Housing material	PBT
Possible actuation magnets	MG S M to be ordered separately

#### PART NUMBERS

Magnus MG S includes multi-language instruction manual and CE declaration of conformity.

MG S 20 ordering code: 1291000

MG S M ordering code: 1291001

#### CABLES NEEDED

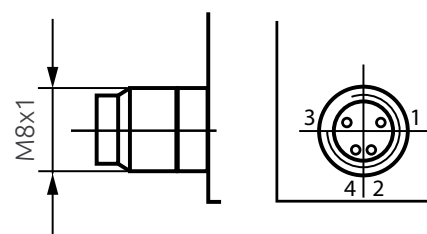
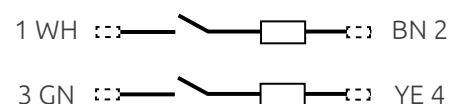
M8 4-pole. See [page 42](#) (CGx, CG9x)

#### ACCESSORIES

MG d1 Control Unit. See [page 39](#)

#### CONNECTOR

M8 4-pole connector.



## APPROVALS

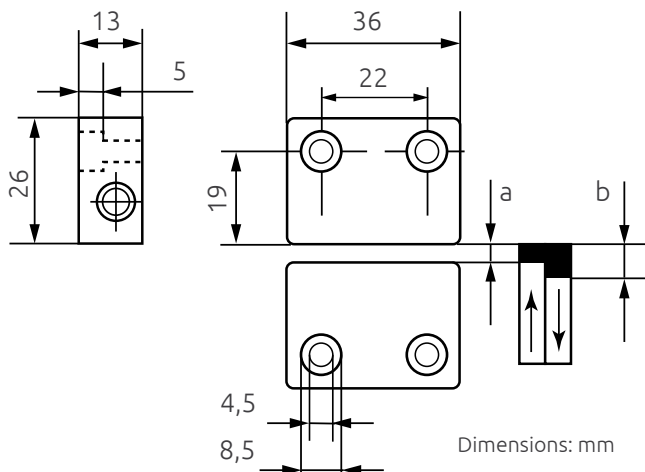
Safety Level PL e when connected to Mosaic  
Up to PL d when connected to MG d1

- 2006/42/EC: "Machine Directive"
- 2014/30/EU: "Electromagnetic Compatibility Directive"
- 2014/35/EU: "Low Voltage Directive"
- EN 61508-1:1998 "Functional safety of electrical/electronic programmable electronic safety related systems - General requirements"
- EN 61508-2:2000 "Functional safety of electrical/electronic/programmable electronic safety related systems - Requirements for electrical/electronic/programmable electronic safety-related systems"
- EN 61508-3:1998 "Functional safety of electrical/electronic programmable electronic safety related systems: Software requirements"
- ISO 13849-1:2008 "Safety of machinery - Safety-related parts of control systems - Part 1: General principles for design"
- IEC 62061: "Safety of machinery - Functional safety of safety-related electrical, electronic and programmable electronic control systems"



## MECHANICAL DATA

### DIMENSIONS



Gaps (operating distance) for safe switching function in mm:

MINIMUM GAP	0,5	-
ON	3	a
OFF	10	b