



Ivory Series

6", 8" & 12" Open-platform Windows® CE Touchscreen Computers

Affordable
Versatile
Powerful





6", 8" & 12" Open-platform Windows® CE Touchscreen Computers

Maple Systems Ivory Series CE Touchscreen Computers offer a powerful and affordable multimedia experience for industrial operations. With customizable graphics and superior connectivity, our Ivory Series Touchscreens have the versatility to handle even the most complex industrial applications with ease.



Why Open Platform?

Open-platform operator interfaces are uniquely versatile because they can be programmed to fit your exact needs, virtually without limitation.

- Fully customizable
- Features limited only by the software you choose
- Connects to the controllers you use
- Microsoft® Windows® CE.net™ 4.2 preloaded

Seamless Connectivity

The Ivory Series has multiple serial ports and an Ethernet port to allow seamless connection to many devices. Some of the more than 100 controllers supported by the Ivory Series (with InduSoft™ WebStudio software) include:

Allen-Bradley Ethernet CIP (Ethernet)	Gamma Flux TTC	Mitsubishi Melsec-A	Siemens S7 (Ethernet)
Allen-Bradley Ethernet DF1 (Ethernet)	Garmin P000/L001/A010	Modbus RTU/Ascii Master	Siemens S7MPI
Altus ALNET I/II	GE SNP	Modbus RTU/Ascii Slave	Siemens S7 PPI
Beckhoff TwinCAT ADS	GE SRTP (Ethernet)	ModbusTCP Master (Ethernet)	Sixnet
Berkeley Bxi Controller	Giddings & Lewis	ModbusTCP Slave (Ethernet)	Telemecanique
Bosch-Rexroth BUEP	Hitachi-H Series	Modicon	Tolomatic
Bristol Babcock	IDEC Microsoft	Motoman XRC	Toshiba Prosec-T1/T2
Control Microsystems	Johnson Controls N2	Motorola	Trio Motion
CTC Motion Controllers	Kebco 66019	Omron FINS (Ethernet)	Twido
Cutler Hammer D50/D300	Keithley DAQ	Omron Hostlink	UniTelWay
DSC Reader	Klockner-Moeller Sucom1	OPTO22 Mistik	Wago
Emerson Motion Control	Koyo CCM	Plain Text	Whedco
Enersafe Lifelink	Koyo ECOM (Ethernet)	Plain Text (Ethernet)	Yaskawa
Euromap 17	Microblau TD3000	Satchwell Satchnet	
Fertron PLC	Mitsubishi FX	Siemens S5 PG Port	

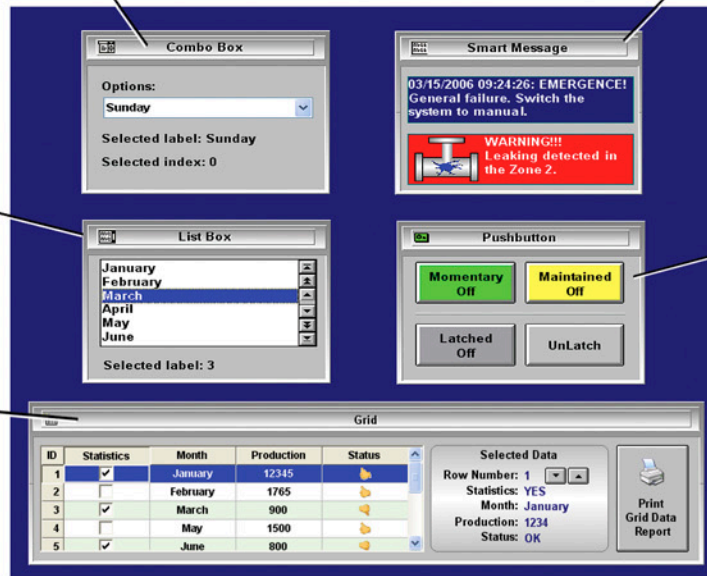
Control Objects for Easy Data Entry and Control

Active control objects provide a familiar format for writing values to a register in the controller.

Combo boxes provide a familiar drop-down list of parameters to be written to the controller.

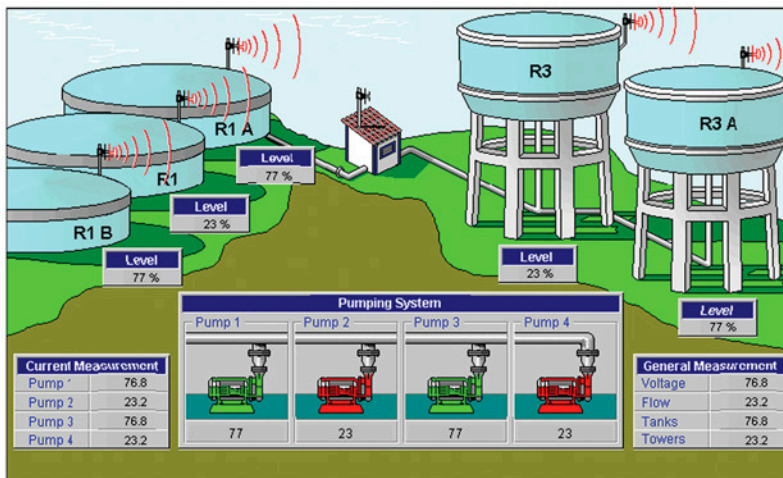
Scroll through options in a **list box** to write selected items to the controller.

The **grid object** places data in a familiar CSV-type format that can be updated as numeric entry. SQL databases can be visualized or updated.



Smart messages can be programmed to provide operator feedback upon execution of a control object.

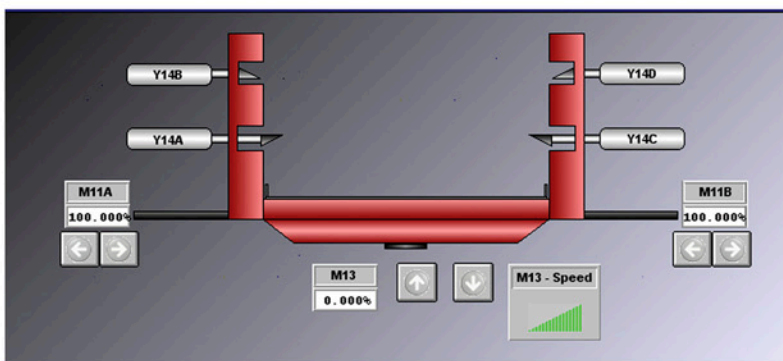
Buttons are available as graphic objects, which can be attached to any control function. They can be disabled by a tag and grayed out when disabled, or when the current security level is lower than that assigned to the button.



True-to-life Graphics

Design the screens you want with powerful graphics tools that allow you to fully customize your screens to your unique application.

- Animations
- Graphics libraries of commonly-used objects & symbols
- Images can be imported in multiple formats like JPG, GIF, EMF and WMF and sized onscreen.
- Drawing tools are available to draw simple objects and enhance imported or library graphics.
- Use any font onscreen that is available in Windows.

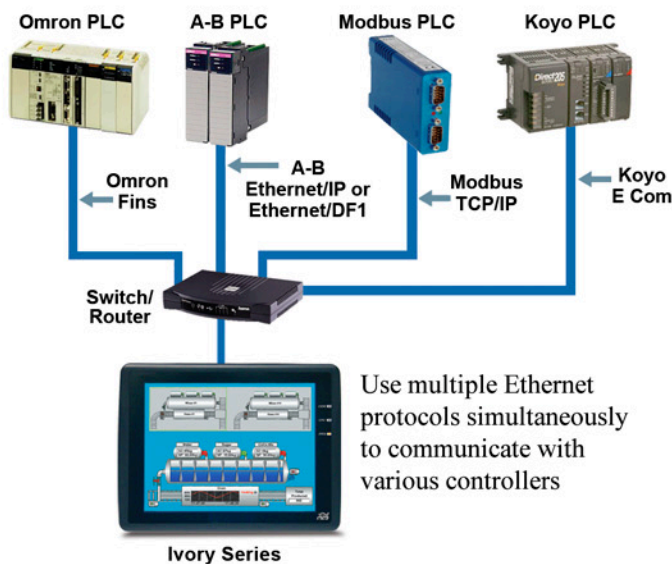


Connectivity

The Ivory Series is loaded with hardware features that allow users to connect to multiple devices.

Ethernet

10BaseT Ethernet allows easy access to Networks and the World Wide Web.



Connect multiple devices with USB & RS232 - RS485/422 comm ports

Need a keyboard or a mouse? Want to print a report? These things and more are possible using the various connectivity options.

USB

Connect Windows® CE-compatible USB devices:

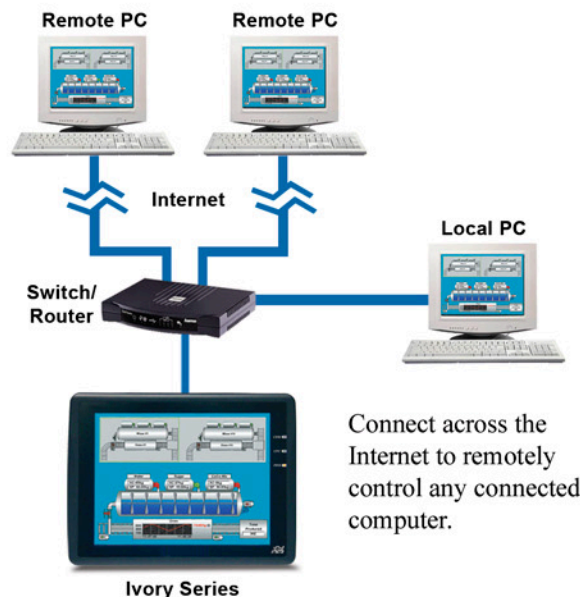
- Keyboards
- Printers
- Mouse
- Card readers
- Wireless modules
- Other CE compatible devices

Communication Ports

RS232 and RS485/422 2-wire or 4-wire ports are available for connection of multiple devices.

Web Solution

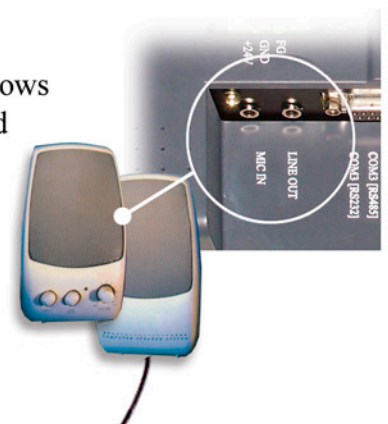
Using a web browser such as Internet Explorer, you can visualize HMI screens and monitor on-line/history data from any remote station (including PCs, HMIs, or PDAs). You can also send commands and set-points back to the HMI from your remote PC. The InduSoft™ WebStudio software provides security features to restrict access from unauthorized remote sites.



Audio

A line-level audio jack allows connection of speakers and microphone for sound input and output.

- Verbal instructions
- Audible alarms
- Audible system prompts



Example of possible connectivity with Ivory Series

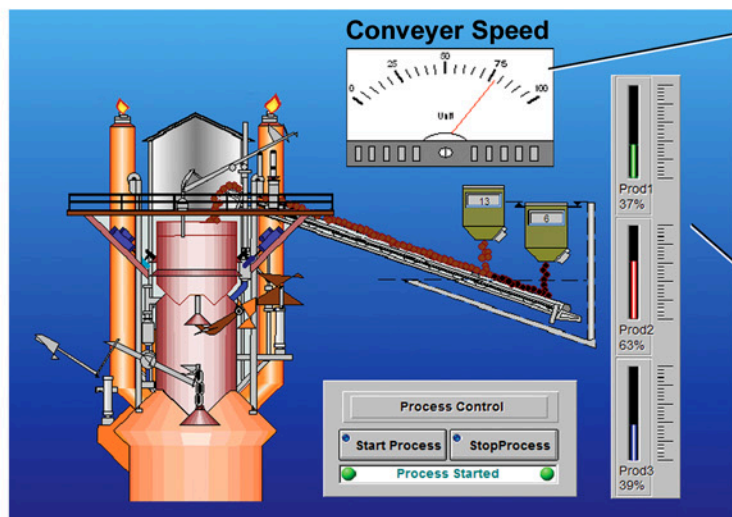
Featuring InduSoft™ WebStudio

Display Data in Easily Interpreted Formats

Make raw data more meaningful and easy to interpret with graphics tools that provide instant meaning.

Database Connectivity

The Ivory Series HMIs, using InduSoft™ WebStudio software, can save and retrieve data directly from any SQL Relational Database, such as SQL Server, Oracle, Sybase, MySQL, Access and many others. Link application tags to remote databases and integrate the plant-floor with the ERP. History tasks such as Alarms, Events and Trend graphics can also be saved into remote SQL Relational Databases.



Meters

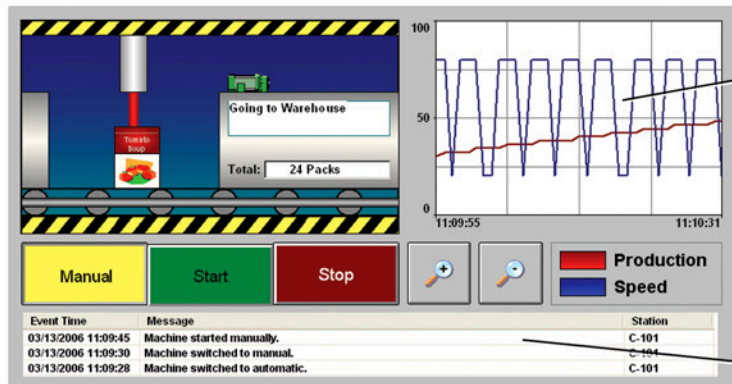
Use a variety of meters to monitor data in real-time.

- Standard meters can be found in libraries.
- Create custom meters
- Specify range and needle movement
- Create custom scales

Bargraphs

Versatile bargraphs can be customized to display meaningful data such as tank levels.

- An ellipse or rectangle can be configured as a bar graph.
- Bargraphs can be any color, and can move up, down, left, or right.
- Bargraphs can also scale data.



Trends

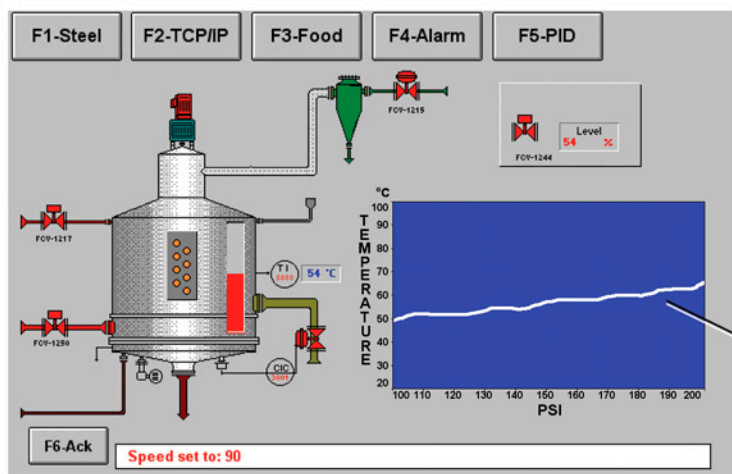
Trends can be used to display live or historical data occurring over time.

- Create trends with up to 8 pens.
- Axes and legends are created automatically.
- Trends display time and date along horizontal axis.

Alarms & Events

Alert operators to critical conditions using the alarm feature.

- Organize by groups and priority.
- Save alarm data to disk (including Compact Flash.)
- Alarm format can be customized.
- Keep track of total numbers of alarms and unacknowledged alarms.
- Send emails about alarms.



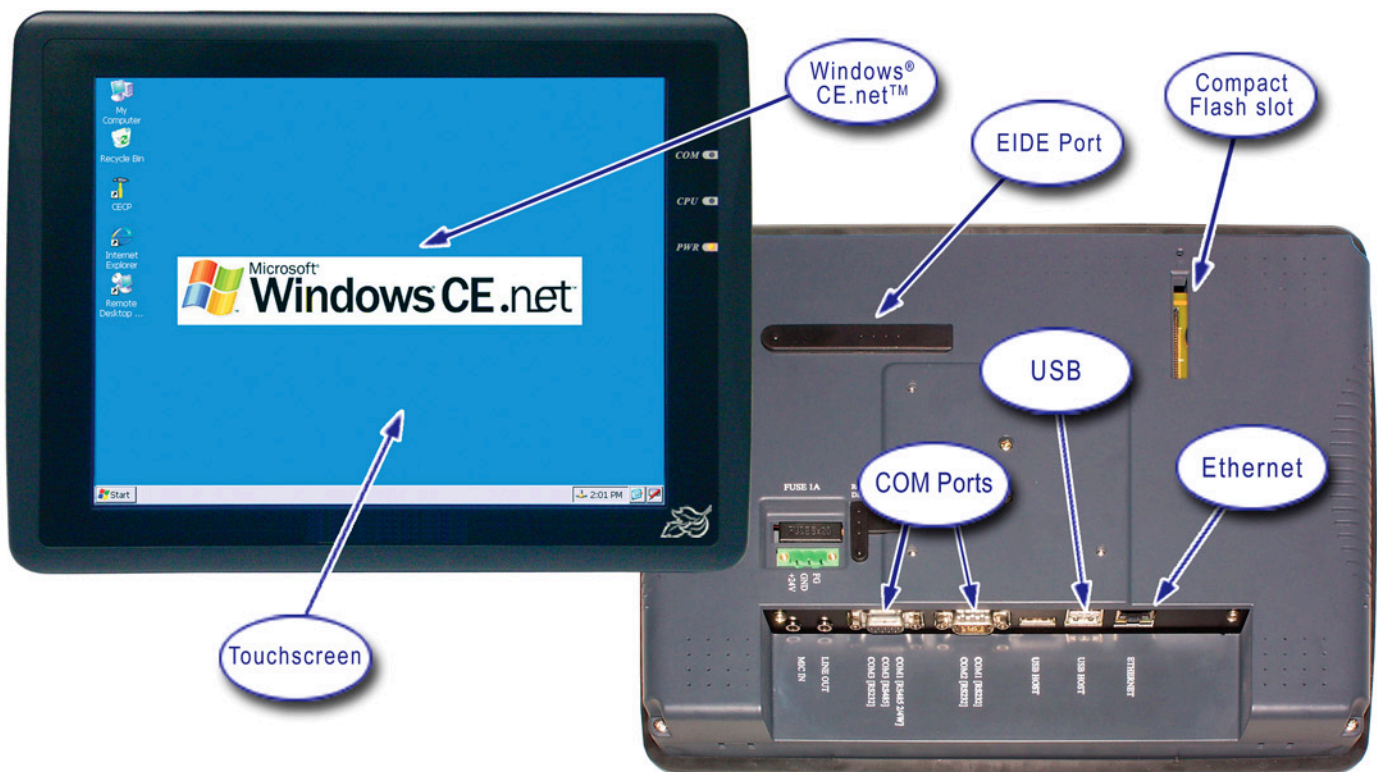
XY Plots

Interpret data using customized XY plots that plot one value against another.

Rugged and Dependable Hardware

The Ivory Series is designed to meet today's tough standards for durability and control. It complies with EMI FCC Class A and CE EN50081-2 (1993) & EN50082-2 (1995), and is UL Listed for the United States and Canada.

The bright displays support graphics with true to life representation. The RISC-based processor and high-speed data communication ports assure fast screen updates and nearly instantaneous reaction to keypresses. The analog resistive touchscreens guarantee optimum performance with a lifespan of over 1 million keypresses. And with a full two-year manufacturer's warranty, you can rest assured that these units are built to last.



Expand Memory with Compact Flash and EIDE Ports

Need more memory than the 32 MB Flash and 64 MB DRAM? Use the USB or compact flash port (available on all units) and EIDE port (available on the 12" unit) to attach additional flash memory.

Preloaded with Microsoft® Windows® CE.net™ 4.2

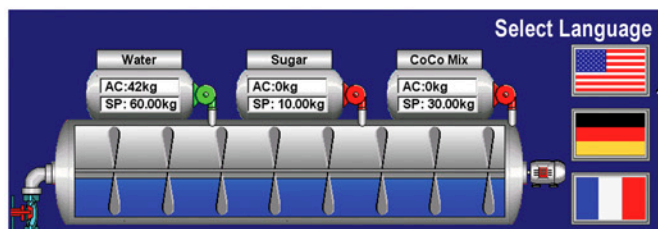
The familiar Windows environment provides an intuitive graphic interface that enables operators to easily maneuver through screens and applications.

Programming & Reporting Features

Need to run scripts? Want to print reports? The Ivory Series and InduSoft™ WebStudio software provide a host of features that allow you to do these things and more.

Macros

Use macros to create scripts that perform simple mathematic operations on the operator interface. Functions are also provided for a variety of more complex mathematical operations, changing screens, security, logging data, and much more.

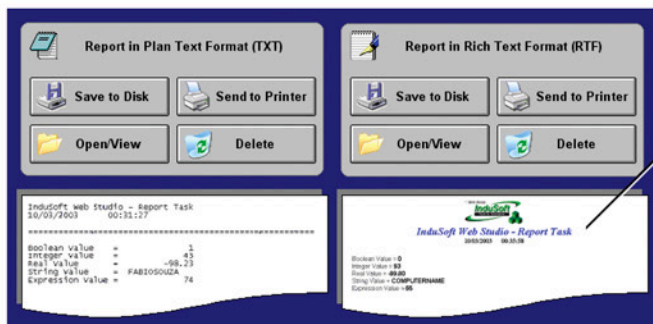
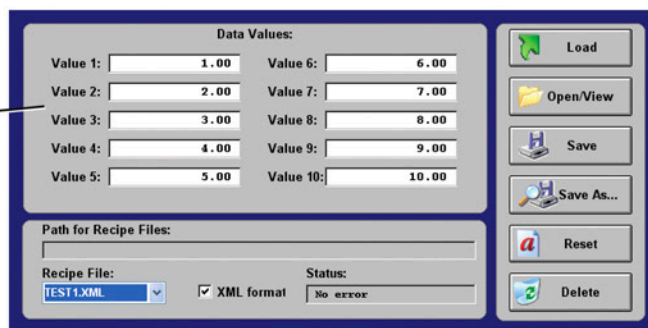


Multi-language Feature

Multiple languages can be easily facilitated by attaching a translation file to any project.

Recipes

Write batches of information to the controller using the recipe feature.



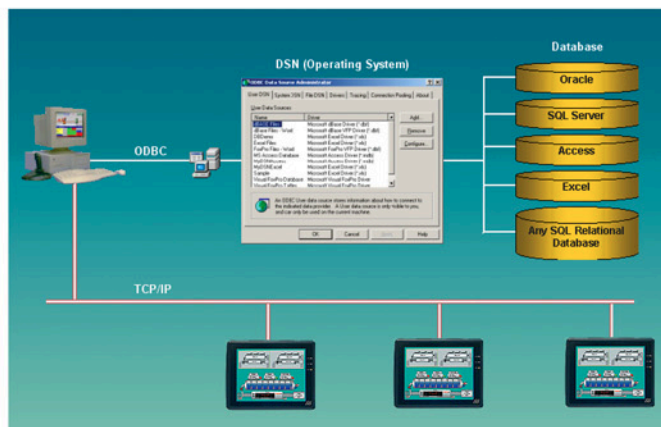
Reports

Build custom reports that communicate all types of data including alarms, incidents and more. The grid function allows report data to be displayed in a manner similar to a CSV file. Reports can be printed, saved on Compact Flash, shared via the network or emailed to remote locations.

Import Resources

A number of resources can be imported directly into a project:

- RSLogix database (from a CSV file)
- TwinCAT database (from a Report file created by the TwinCAT software)
- OPC Server database (reads directly from an OPC Server on the PC)
- Generic CSV file
- ODBC database

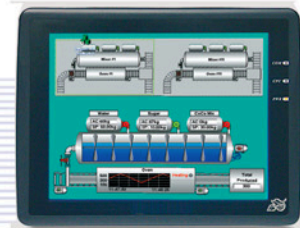


Tag Database

Predefined tags are available, providing access to a variety of system information, and custom tags can be created to provide a link between the screens and the controller.



Models



Part Number	HMI606T	HMI608T	HMI612T
Operating System	Microsoft® Windows® CE.net™ 4.2 Professional inside		
Display Type	5.6" TFT, 65536 color	8" TFT, 65536 color	12.1" TFT, 65536 color
Display Size (WxH) Viewing Area	4.5" x 3.5" [114x89 mm]	6.1" x 4.6" [155x117 mm]	9.75" x 7.37" [247x187 mm]
Display Brightness	500 cd/m²	400 cd/m²	250 cd/m²
Display Contrast	250:1		200:1
Display Resolution	320x234	640x480	800x600
CCFL Lifetime	40,000 hr	50,000 hr	
Touchscreen	4-wire analog resistive		
CPU Type	Cirrus Logic EP9315 200Mhz 32 bit RISC-processor with built-in graphics accelerator		
Memory	32 Mb Flash and 64 Mb DRAM built-in		
Communication Ports	2 Serial Ports – Com1: RS232/RS485 2 wire & 4 wire, Com3: RS232/RS485 2 wire		
Programming Port	Com2: RS232		
Ethernet	10/100Base-T		
USB Host Ports	2 USB 2.0 (12 Mbps)	3 USB 2.0 (12 Mbps)	
CompactFlash™ Port	Type I/II		
Expansion Interface	None	44-pin EIDE for Flash Drive or HDD	
Audio Port	Line Out		Line Out, Mic In
Real Time Clock	Built-in		
Power Requirements	300mA @ 24VDC	500mA @ 24VDC	
Agency Approvals	UL Listed; CE, complies with FCC Class A		
Operating Temperature	0 to 45°C (32 to 113°F)		
Dimensions (WxHxD)	8.0"x5.9"x1.9" [204x150x48mm]	9.1"x6.9"x2.2" [231x176x55mm]	12.7"x9.6"x2.0" [322x243x51mm]
Weight	Approx 1.9 lbs (0.9Kg)	Approx 2.9 lbs (1.3Kg)	Approx 4.6 lbs (2.1Kg)



All images were created using InduSoft™ WebStudio. Configuration software is not included with Ivory Series unit. InduSoft™ WebStudio or comparable configuration software must be purchased separately.

Every system needs an operator interface solution. We have every solution...

At Maple Systems, we've specialized in operator interface solutions for industry for more than 22 years. With a full line of products that range from alphanumeric and ASCII terminals to fully-loaded Windows CE and XP touchscreen industrial computers, Maple Systems has a reliable and affordable operator interface for every application.

Wherever you look in industrial automation, you'll find Maple Systems. Our operator interface technology can be found in all types of applications including packaging, medical technology, process control, SCADA systems and much more. Over the years, we've helped thousands of Maple Systems customers to create customized operator interface applications that meet their exact specifications.

Presented by



No matter how simple or complex your application - from simple input/output to complex data logging and process control networks, our team of operator interface experts can help you find the perfect affordable operator interface.



425.745.3229

425.745.3429 (fax)

www.maplesystems.com

808 134th St SW, Suite 120
Everett, WA 98204

Powerful ... Affordable ... Versatile

Smart Solutions from the Operator Interface Specialists